

## DISASSEMBLY

### 1. REMOVE HEADREST

### 2. REMOVE POWER SEAT SWITCH KNOBS

Using a screwdriver, remove the power seat switch knobs.

HINT:

Tape the screwdriver tip before use.

### 3. REMOVE SEAT CUSHION SHIELD LH

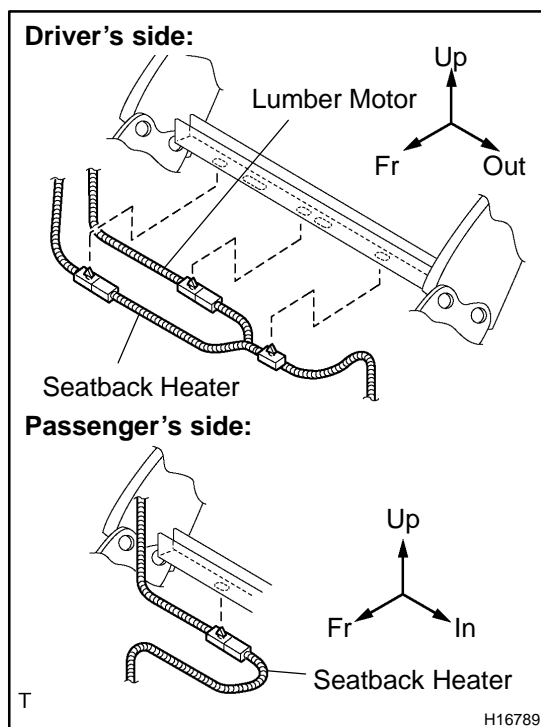
- Remove the screw.
- Disconnect the connector, then remove the seat cushion shield LH.
- Remove the 2 screws and lumbar support switch from the seat cushion shield LH.

### 4. REMOVE SEAT CUSHION SHIELD RH

Remove the 2 screws and seat cushion shield RH.

### 5. REMOVE SEATBACK ASSEMBLY

- Disengage the hook.



- Disconnect the connectors.

- Remove the 4 bolts and seatback assembly.

### 6. REMOVE SEATBACK COVER

- Remove the headrest supports.
- Remove the seatback frame from the seatback cover with pad.
- Driver's seat:  
Remove the 2 bolts and lumbar support assembly from the seatback frame.
- Remove the seatback cover from the seatback pad.

### 7. IF NECESSARY, REPLACE SEATBACK SEAT HEATER (See page BO-101 )

### 8. REMOVE SEAT CUSHION ASSEMBLY

Remove the 4 bolts and seat cushion assembly.

### 9. REMOVE SEAT CUSHION COVER

- Remove the seat cushion frame from the seat cushion cover with pad.
- Remove the silencer from the seat cushion frame.
- Remove the seat cushion cover from the seat cushion pad.

### 10. IF NECESSARY, REPLACE SEAT CUSHION SEAT HEATER (See page BO-101 )

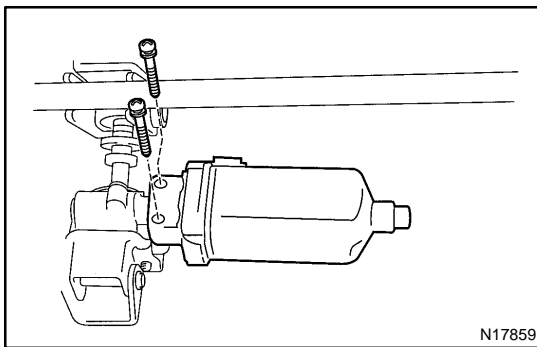
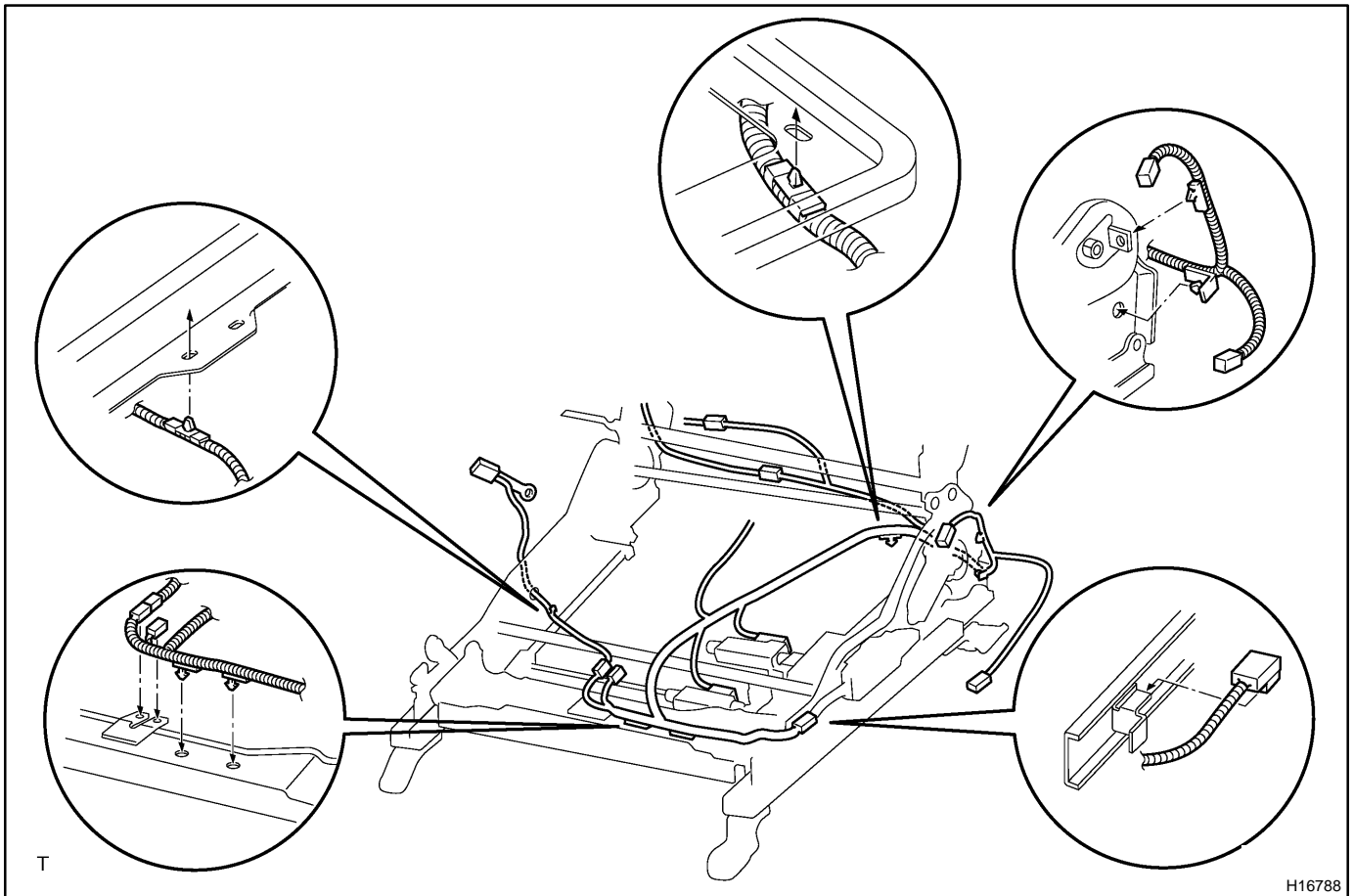
### 11. REMOVE INSIDE INNER SHIELD

### 12. REMOVE OUTSIDE INNER SHIELD

### 13. REMOVE WIRE HARNESS

- Disconnect the connectors.

- (b) Disengage the clamps of wire harness, then remove the wire harness from the seat adjuster.

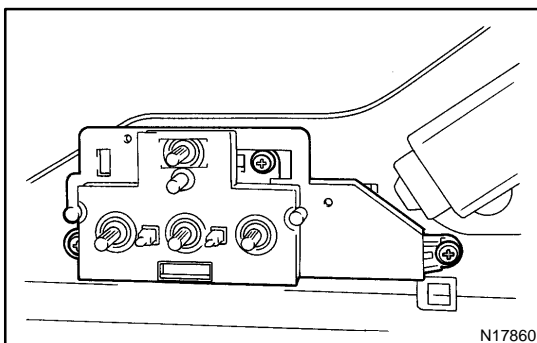


#### 14. REMOVE SLIDE MOTOR

- (a) Remove the 2 screws.  
(b) Pull out the drive cable.

#### 15. REMOVE VERTICAL MOTOR

Remove the 2 screws and motor.

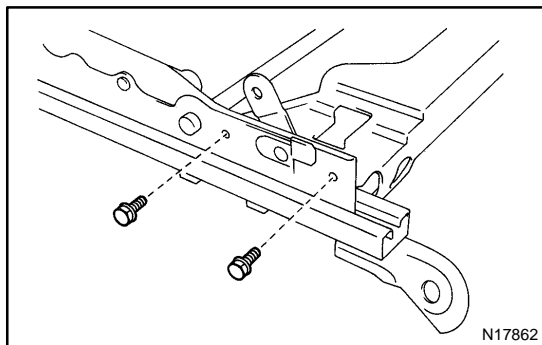


#### 16. REMOVE POWER SEAT SWITCH

Remove the 3 screws and switch.

#### 17. REMOVE RECLINING MOTOR

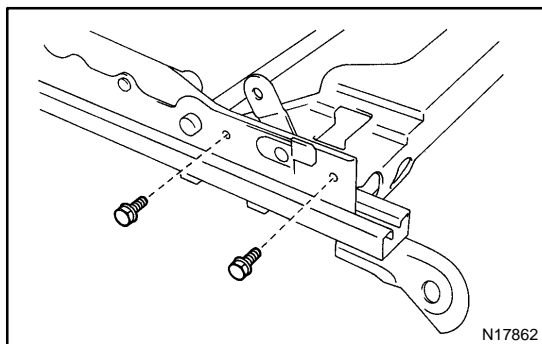
Remove the 3 screws and motor.

**18. REMOVE SEAT SUPPORT SCREW**

- (a) Remove the 2 bolts, 2 nuts and support screw.
- (b) Employ the same manner described above to the other side.

**19. REMOVE FRONT SEAT INNER BELT**

Remove the nut and inner belt.

**20. REMOVE SLIDE MOTOR SUPPORT BRACKET**

Remove the 4 bolts and support bracket.

**21. REMOVE RECLINING CONNECTING PIPE**